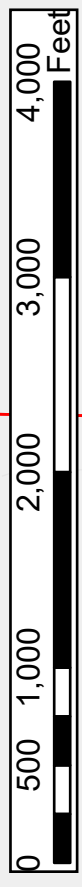
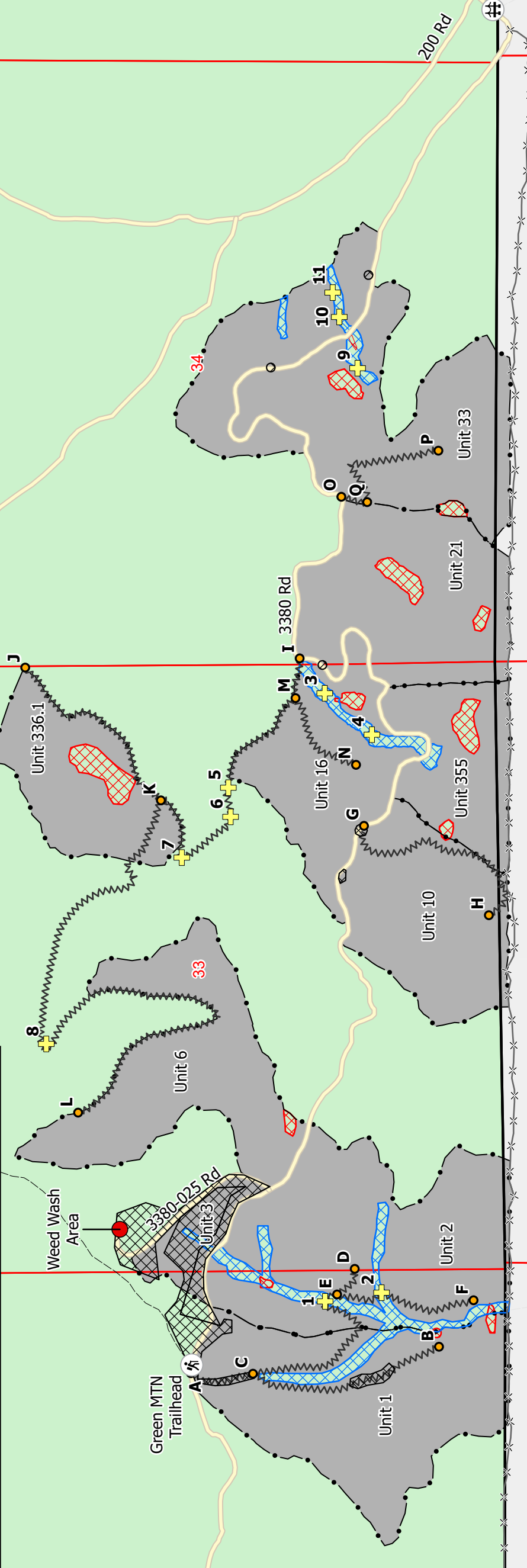
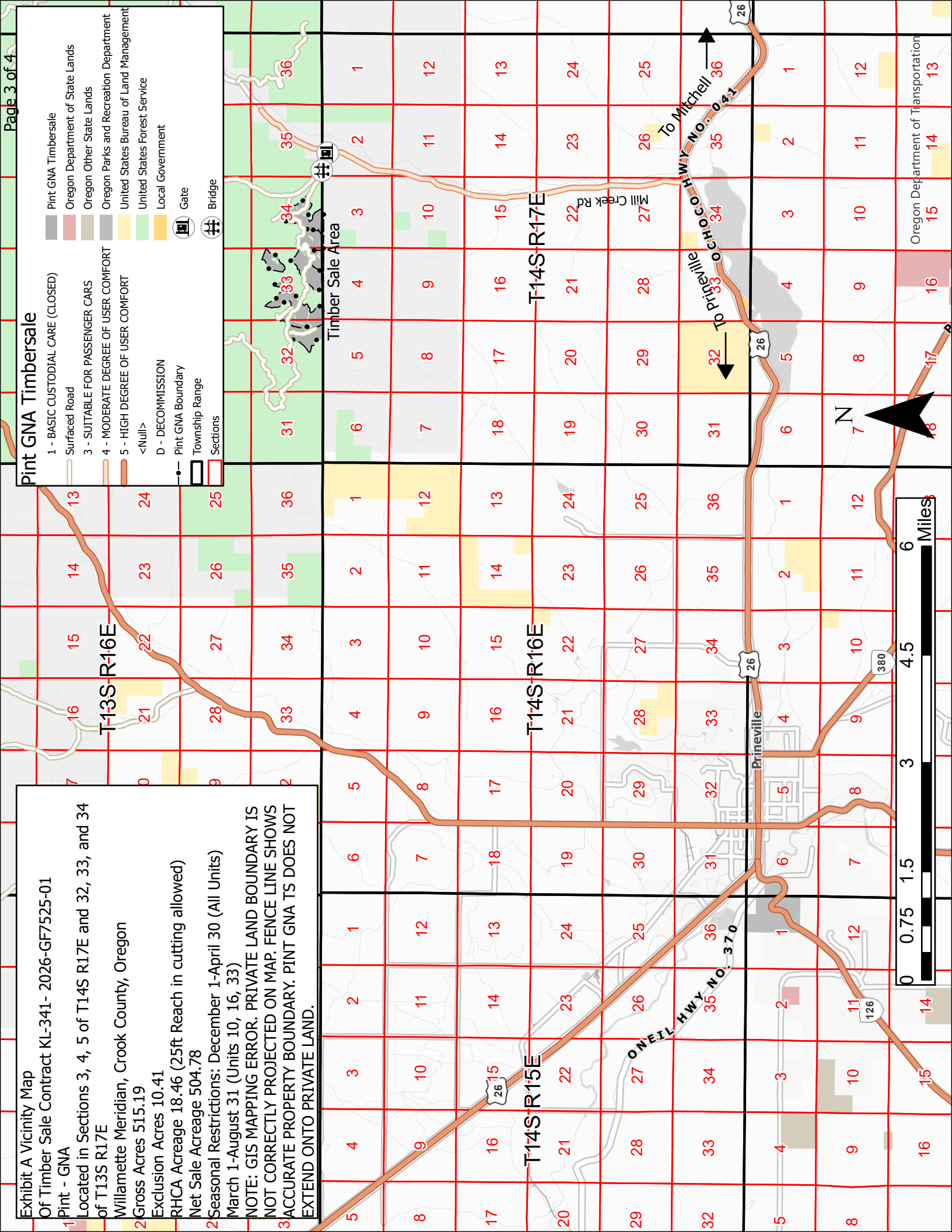


Pint GNA Timbersale

	Pint GNA Timbersale		Surfaced Road
	Pint GNA Boundary		Township Range
	United States Forest Service		Sections
	RHCA Buffer		Bridge
	Exclusions		Fence
	Invasive Weed Zone		Green Mountain Trail
	Project Points		Green Mountain Trailhead
	Corduroy Crossings		Weed Wash Area
	Road Improvement		

Exhibit A
Of Timber Sale Contract KL-341- 2026-GF7525-01
Pint - GNA
 Located in Sections 3, 4, 5 of T14S R17E and 32, 33, and 34 of T13S R17E
 Willamette Meridian, Crook County, Oregon
 Gross Acres 515.19
 Exclusion Acres 10.41
 RHCA Acreage 18.46 (25ft Reach in cutting allowed)
 Net Sale Acreage 504.78
 Seasonal Restrictions: December 1-April 30 (All Units)
 March 1-August 31 (Units 10, 16, 33)
NOTE: GIS MAPPING ERROR. PRIVATE LAND BOUNDARY IS NOT CORRECTLY PROJECTED ON MAP. FENCE LINE SHOWS ACCURATE PROPERTY BOUNDARY. PINT GNA TS DOES NOT EXTEND ONTO PRIVATE LAND.

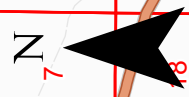




Pint GNA Timbersale

- 1 - BASIC CUSTODIAL CARE (CLOSED)
- 3 - SUITABLE FOR PASSENGER CARS
- 4 - MODERATE DEGREE OF USER COMFORT
- 5 - HIGH DEGREE OF USER COMFORT
- <Null>
- D - DECOMMISSION
- Surfaced Road
- Timber Sale Area
- Gate
- Bridge
- Township Range
- Sections
- Pint GNA Timbersale
- Oregon Department of State Lands
- Oregon Other State Lands
- Oregon Parks and Recreation Department
- United States Bureau of Land Management
- United States Forest Service
- Local Government

Exhibit A Vicinity Map
 Of Timber Sale Contract KL-341- 2026-GF7525-01
 Pint - GNA
 Located in Sections 3, 4, 5 of T14S R17E and 32, 33, and 34
 of T13S R17E
 Willamette Meridian, Crook County, Oregon
 Gross Acres 515.19
 Exclusion Acres 10.41
 RHCA Acreage 18.46 (25ft Reach in cutting allowed)
 Net Sale Acreage 504.78
 Seasonal Restrictions: December 1-April 30 (All Units)
 March 1-August 31 (Units 10, 16, 33)
 NOTE: GIS MAPPING ERROR. PRIVATE LAND BOUNDARY IS
 NOT CORRECTLY PROJECTED ON MAP. FENCE LINE SHOWS
 ACCURATE PROPERTY BOUNDARY. PINT GNA TS DOES NOT
 EXTEND ONTO PRIVATE LAND.



Oregon Department of Transportation

126

380

26

26

26

26

26

26

26

26

26

26

26

26

26

26

26

26

26

26

26

26

26

26

26

26

26

26

26

26

26

26

26

26

26

26

26

26

26

26

26

26

26

26

26

26

26

26

26

26

26

26

26

26

26

26

26

26

26

26

26

26

26

26

26

26

26

26

26

26

26

26

26

26

26

26

26

26

26

26

26

26

26

26

26

26

26

26

26

26

26

26

26

26

26

26

26

26

26

26

26

26

26

26

26

26

26

26

26

26

26

26

26

26

26

26

26

26

26

26

26

26

26

26

26

26

26

26

26

26

26

26

26

26

26

26

26

26

26

26

26

26

26

26

26

26

26

26

26

26

26

26

26

26

26

26

26

26

26

26

26

26

26

26

26

26

26

26

26

26

26

26

26

26

26

26

26

26

26

26

26

26

26

26

26

26

26

26

26

26

26

26

26

26

26

26

26

26

26

26

26

26

26

26

26

26

26

26

26

26

26

26

26

26

26

26

26

26

26

26

26

26

26

26

26

26

26

26

26

26

26

26

26

26

26

26

26

26

26

26

26

26

26

26

26

26

26

26

26

26

26

26

26

26

26

26

26

26

26

26

26

26

26

26

26

26

26

26

26

26

26

26

26

26

26

26

26

26

26

26

26

26

26

26

26

26

26

26

26

26

26

26

26

26

26

26